

LOBO conquers the Seven Seas

With a whole series of sensational installations on cruise ships, LOBO established itself as the premium supplier of laser systems on sea.



Queen Mary 2 - the world's largest and most luxurious passenger ship relies on laser entertainment technology of LOBO.

Just a few days ago, the "Magica", the new flag ship of Europe's leading shipping company COSTA, set sail for the first time.

With the "Magica" and its sister ship, the "Fortuna", Costa reaches new dimensions. According to own statements, they are regarded as the largest and most modern cruise ships in the Mediterranean. Each of the 272 meter long hotels on sea have 105.000 gross registered tons and offer pure luxury combined with Italian ambience for 3.470 passengers.

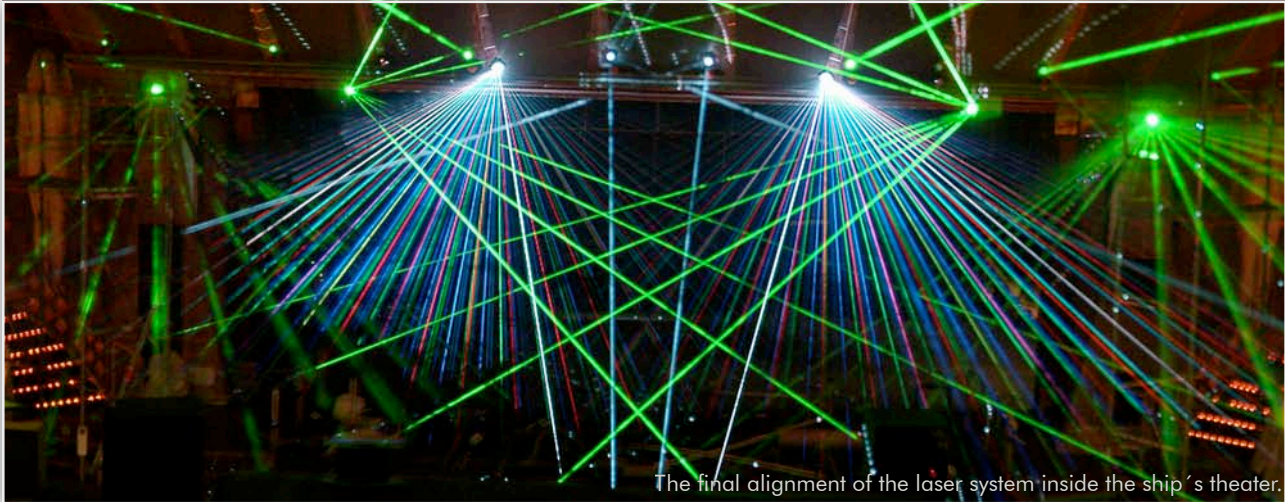
But these are just figures. You only become aware of the dimensions of such a ship when getting closer to the port of the "Magica". Visible for miles, the silhouette of the Magica dominates like a combination of sky scraper and space ship the sometimes tranquil islands in

the Mediterranean sea. Perfection into every detail is the maxim of Costa and this applies all the more to the amusement sector. The hull of the ship holds a

theatre for more than 1.000 guests, which would even be a sensation on land regarding its equipment and size.

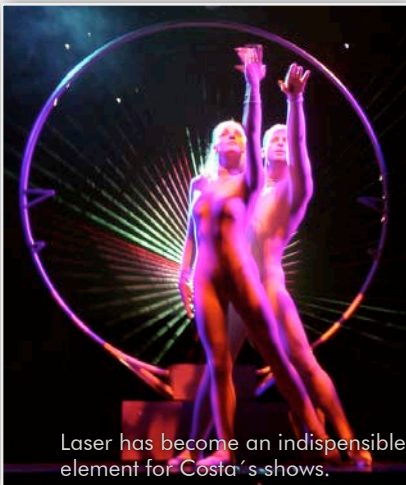


The impressive silhouette of the Costa flagship „Magica“ is visible kilometers away from the port.



The final alignment of the laser system inside the ship's theater.

Here every evening an own ensemble stages magnificent revues, supported by a gigantic stage machinery. As a crea-



Laser has become an indispensable element for Costa's shows.

tive element in stage shows not to miss anymore, and as the secret star considered by the passengers is a lavishly dimensioned laser system of the South-German-based laser specialist LOBO.

Besides the "Magica" and the "Fortuna" LOBO also installed on the "Mediterranea" three maintenance-free laser projectors controlled by LACON-5 workstations. As the first ship the laser system of "Magica" also features LOBO's latest

laser moving head ZAPHIR. The layout of the control system not only allows a completely independent operation of the laser system but also the external control via DMX, time code, Ethernet or RS-232.

LOBO's Project manager: "Continuous duty between the polar seas and the tropics as well as the constant movements of the hull, which is common also with ships of this size, place highest demands to the equipment. As the ship cruises for weeks far away from any servicing facility, each component of the onboard equipment has to work most reliable, even in extreme situations.

With its first ship of the latest generation, Costa originally engaged another laser manufacturer, and soon had to learn that in regards to the technical

standard and service lasers and lasers are not the same. When asked about their new partner LOBO, Costa's Entertainment Manager goes into rapture:



Installation in "Fortuna's" 1.000-seats theater.



The „Mediterranea“ in the shipyard of the Kvaerner-Massa Yards in Helsinki.



LOBO´s prestigious installation in the „Royal Court Theatre“ of Queen Mary 2.

"The laser shows are greatly appreciated by our guests. From our side I must say it is a very nice system, extremely user friendly and very easy and efficient to maintain. I'm very glad of our choice!"



LOBO, the market leader in the laser show industry, offers Costa the whole all-in-one package: Completely customized solutions at an unsurpassed technical level, a qualified 24 hours hotline service as well as the individual production of complex show programs created by the world-wide renowned LOBO design team.

Therefore it is no wonder that also other shipping companies engage LOBO. Three ships of "Celebrity Cruises" and "Carnival Cruises" have a real network of seaworthy laser projectors supplied

via glass fibers by one central laser system mounted in the center of the ship. Besides the show lounge you find there laser projectors on the pool deck and even above the bow. Already from great distances the ships are recognized as soon as they send search beams across the ocean.

Also the real queen of the oceans, the Queen Mary 2, the largest and the most luxurious cruise ship ever built, relies on

LOBO. Right at the moment when the Queen named the luxury liner with champagne in Southampton, the installation of the DMX-controlled LOBO laser system was just completed deep inside the ship.

With pride LOBO now can claim not only to be the market leader in the laser show industry at land but also to be the established premium supplier of laser systems on the Seven Seas.



Beam Show on the Pool Deck of „Century“.

Important Notice: All laser effects on the images derive from real photographs and have not been generated on computers.